

# BUSINESS GIS SOLUTION FOR GLOBAL SUPPLY CHAIN

Sourabh S Sakhare



February 12, 2014

We deliver Global Engineering Solutions. **Efficiently.**

# Supplier Chain | An Overview

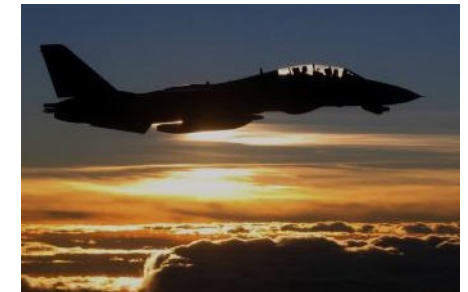


## Business Case | Overview

The customer is a leading global manufacturer of aerostructures for commercial, military and business jet aircraft. Products include fuselages, wings, empennages, nacelles and helicopter cabins.



The customer wanted to have a web application which should provide the capability of visually disseminate their supplier management data pulled from multiple sources to be hosted on their domain.



# Supply Chain Management | Challenges

## Supply-side

## Demand-side

### *Pizza:*

- Daily price variability
- Weekly changes in suppliers
- New Quality reporting
- Traceability challenges based on recipe changes for product options

### *Packaging/Shipping:*

- Frozen Line 'cold carriers'
- Restaurant Line - DSD to local chains
- Each item needs to be recorded/traced

### *Consumer Preference for whole grain:*

- Reduces white flour demand:  
Northeast: 48%  
Southeast: 2%
- Increase whole grain suppliers
- Monitor channel inventory

### *Olives:*

New labeling requirements  
**Traveled 5,000 miles.**

### *Tomatoes:*

Weekly Price changes  
Increase over 40% in 2011  
**Traveled 2,900 miles.**

### *California Red Onions:*

Price increase  
**Traveled 3,000 miles.**

### *Peppers:*

Dozens of recalls in category  
**Traveled 750 miles.**

### *Canadian Wheat:*

Import requiring labels  
license and database to maintain  
records and reports  
**Traveled 1,800 miles.**

### *Mushrooms:*

Shipment spoilage due to  
temperature variability in shipment.  
Replaced with retail supplies at retail price  
**Travelled 5,000 miles.**

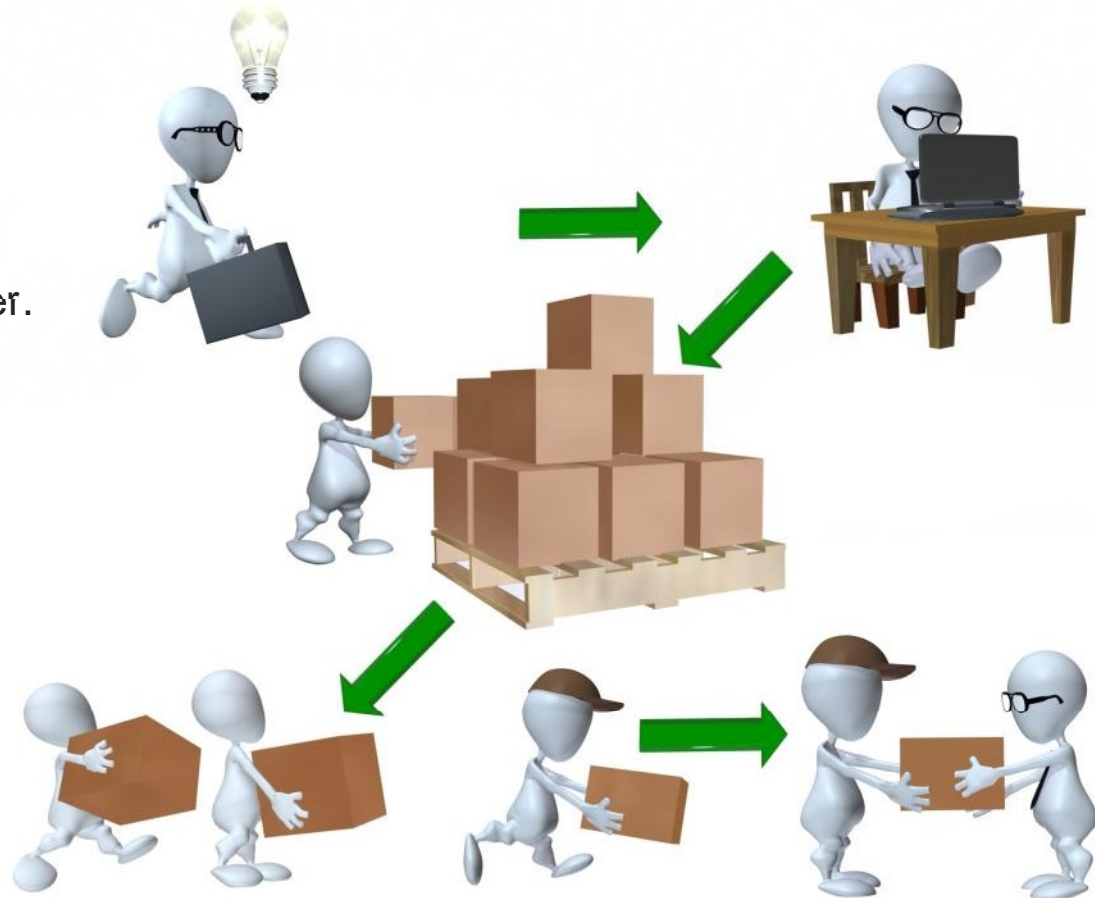
### *Produce price volatility:*

Requires price/margin  
adjustments by restaurants  
and grocers



# Requirement | Overview

- Web application for users at different locations.
- GIS based interactive map.
- Attributes to display on a banner.
- interactive graph
- Analytical information of the search data in graphical view
- Export documents.



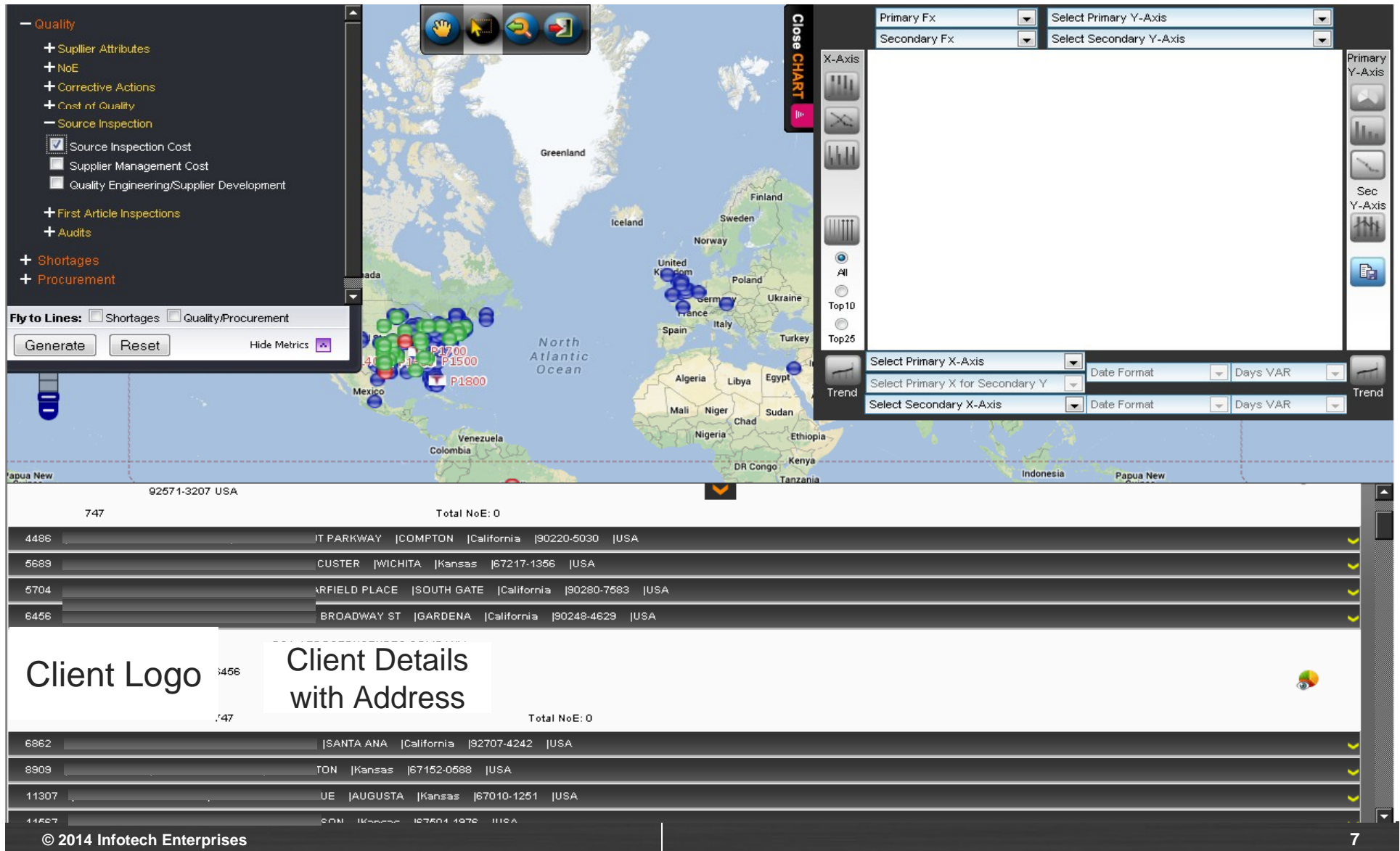
# Solution | GIS Web Application



ID	Address	City	State	Zip	Country
537	IAN AVE.	PERRIS	California	92571-3207	USA
486	UT PARKWAY	COMPTON	California	90220-5030	USA
589	CUSTER	WICHITA	Kansas	67217-1356	USA
704	ARFIELD PLACE	SOUTH GATE	California	90280-7583	USA
456	3 BROADWAY ST	GARDENA	California	90248-4629	USA
362		SANTA ANA	California	92707-4242	USA

Infotech designed and developed the solution titled 'Supply Chain Interactive Map'. The customer provided the entire input data files, requirement of the users and the related business data that was integrated with the application.

# Solution | Vendor Information



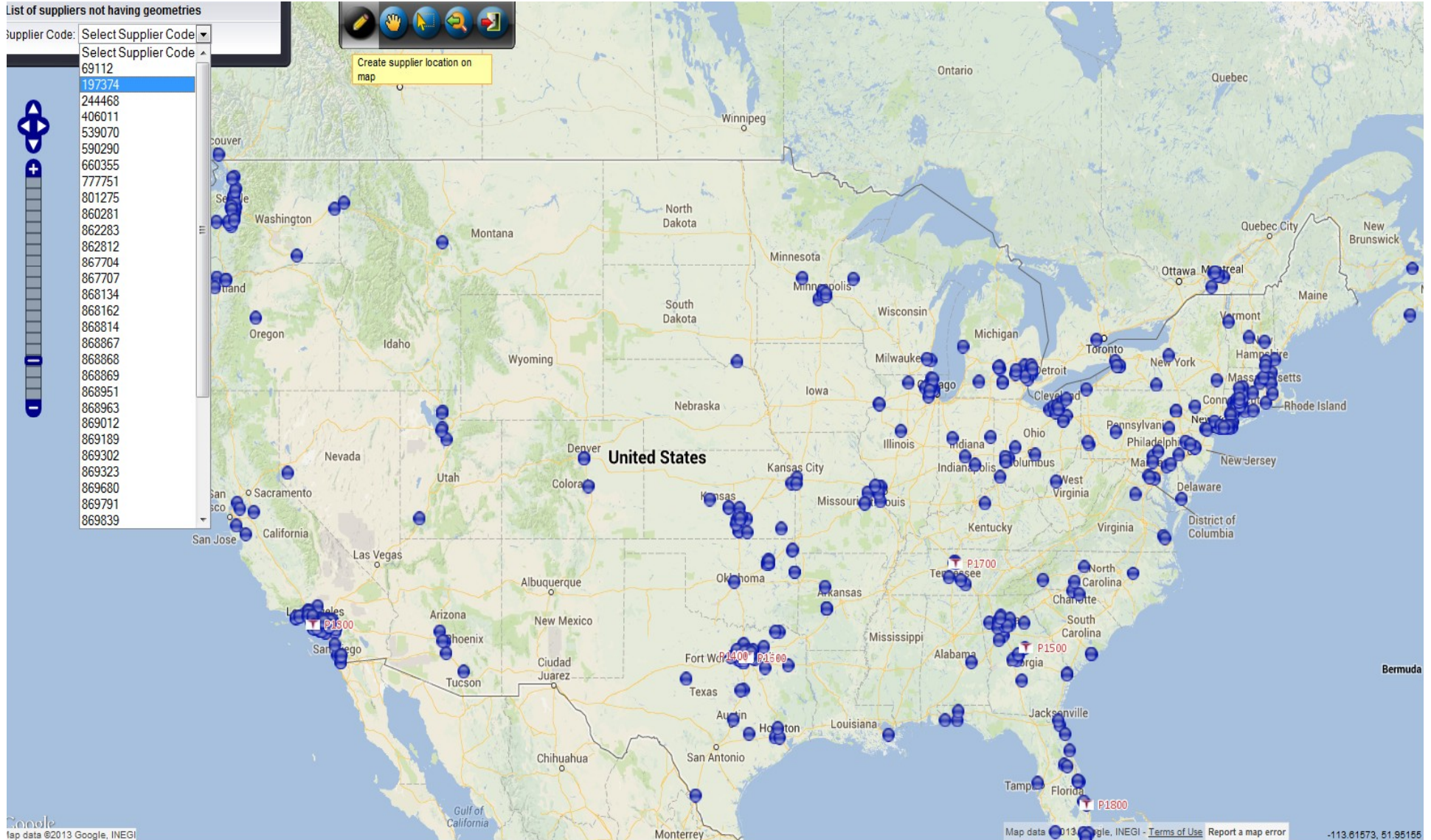
# Solution | Search

List of suppliers not having geometries

- Supplier Code: Select Supplier Code
- Select Supplier Code
- 69112
  - 197374
  - 244468
  - 406011
  - 539070
  - 590290
  - 660355
  - 777751
  - 801275
  - 860281
  - 862283
  - 862812
  - 867704
  - 867707
  - 868134
  - 868162
  - 868814
  - 868867
  - 868868
  - 868869
  - 868951
  - 868963
  - 869012
  - 869189
  - 869302
  - 869323
  - 869680
  - 869791
  - 869839



Create supplier location on map



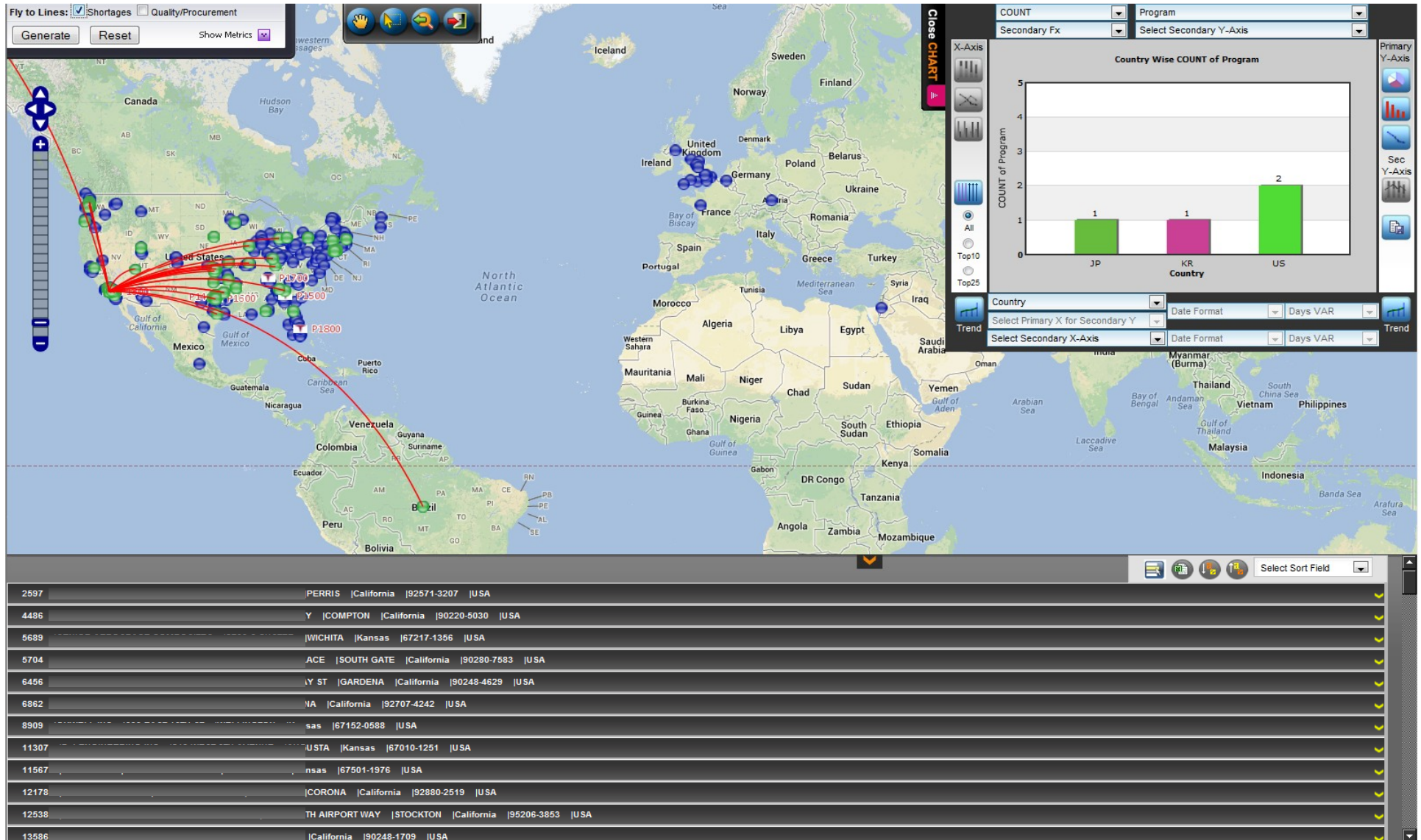
Map data ©2013 Google, INEGI

Map data ©2013 Google, INEGI - Terms of Use Report a map error

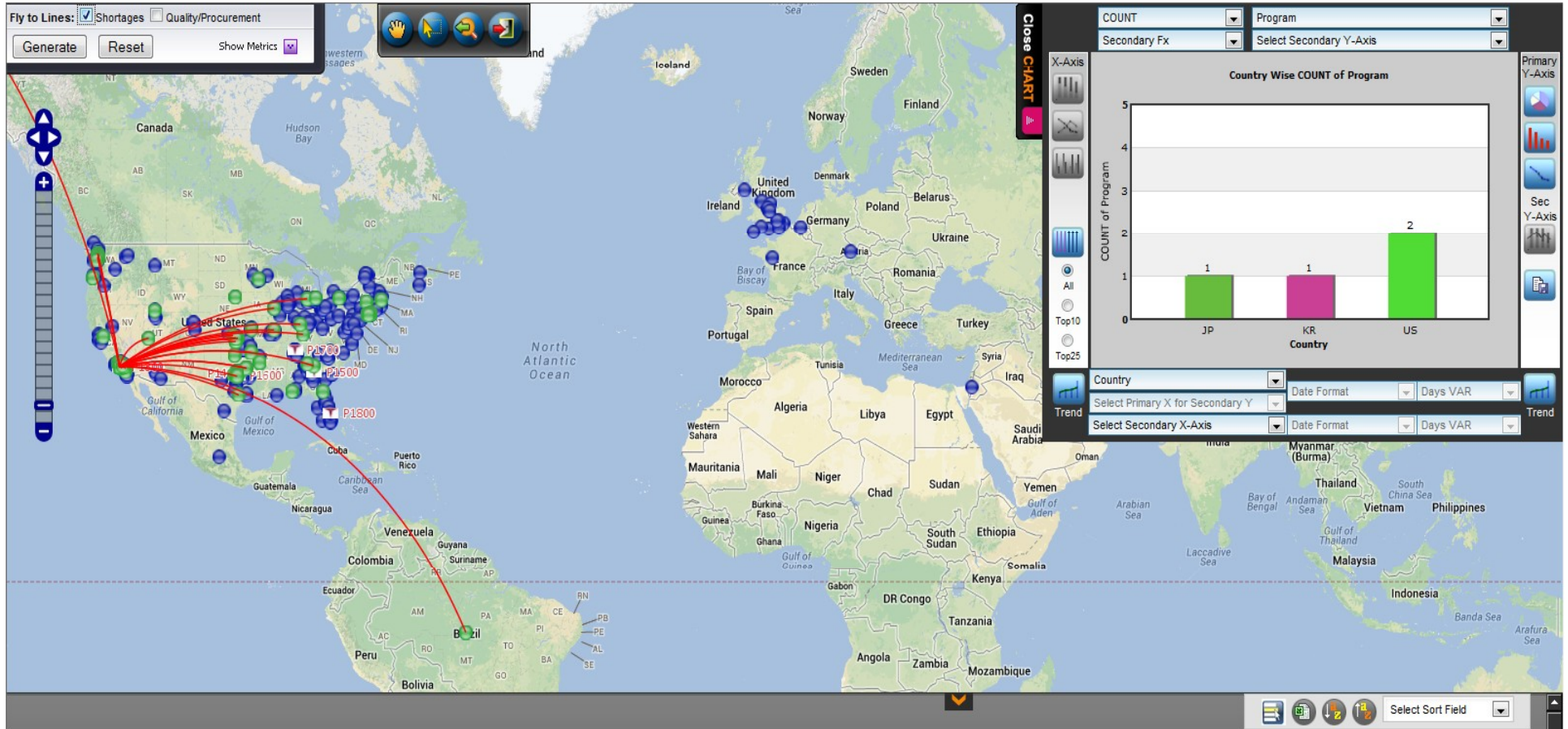
-113.61573, 51.95155



# Solution | Fly Line



# Solution | Connect Suppliers to Plant



# Solution | Results



Supplier Logo    Supplier Code    Vendor Name  
Vendor Address  
City, State, Country

**INTERACTIVE DASHBOARD**    HOME    SIGNOUT

Page 1    Page 2    Page 3    Page 4    Page 5    +

Profile: [ ]

**Shortages** -

- Total Shortages
- Fracture Critical Part Shortages
- Shortages Past on Dock Date
- Shortages past Requirement Date

**Procurement** +

Profile: [ ]

- Quality** +
- Shortages** +
- Procurement** +

Profile: [ ]

- Quality** +
- Shortages** +
- Procurement** +

**CHARTS LIST**    Dashboard:     Last Updated: 06/19/2013    Select Category [v]

**SELECTED CHARTS LIST**    Select No. of Pannels: 16 [v]

Vendor wise Count of NoE Cause	Chart Name	Days Variance wise Count of NoE Cause	Chart Name
Chart Name	Chart Name	Count of NoE Cause	Chart Name

UPDATE    DELETE

## Technologies Used

- JAVA / J2EE
- Geo Server, Open layers
- PostgreSQL 9.1, Post GIS
- Google Maps API
- Tomcat Web server
- Alfresco
- Fusion Charts
- Windows Active Directory



**Thank You**  
**Write me:**  
**[Sourabh.Sakhare@infotech-enterprises.com](mailto:Sourabh.Sakhare@infotech-enterprises.com)**



**We deliver Global Engineering Solutions. Efficiently.**